

**Brett Stephens**  
Junior Outfielder

# 2016 SCHEDULE

DAY	DATE	OPPONENT	TIME
Friday	Feb. 19	North Carolina	6:00 p.m.
Saturday	Feb. 20	North Carolina	2:00 p.m.
Sunday	Feb. 21	North Carolina	1:00 p.m.
Tuesday	Feb. 23	Long Beach State	6:00 p.m.
Friday	Feb. 26	at Cal Poly	6:00 p.m.
Saturday	Feb. 27	at Cal Poly	6:00 p.m.
Sunday	Feb. 28	at Cal Poly	1:00 p.m.
Tuesday	March 1	at UC Santa Barbara	2:00 p.m.
Wednesday	March 2	NC Dinos (Exhibition)	4:00 p.m.
Friday	March 4	Mississippi State ^	6:00 p.m.
Saturday	March 5	Oklahoma ^	6:00 p.m.
Sunday	March 6	USC ^ (TV: P12N)	3:00 p.m.
Tuesday	March 8	at CSUN	2:00 p.m.
Friday	March 11	Texas	6:00 p.m.
Saturday	March 12	Texas	2:00 p.m.
Sunday	March 13	Texas	1:00 p.m.
Friday	March 18	Washington State * (TV: P12N)	4:00 p.m.
Saturday	March 19	Washington State *	2:00 p.m.
Sunday	March 20	Washington State * (TV: P12N)	12:00 p.m.
Thursday	March 24	at Arizona *	6:00 p.m.
Friday	March 25	at Arizona *	6:00 p.m.
Saturday	March 26	at Arizona *	1:00 p.m.
Tuesday	March 29	Cal State Fullerton (TV: P12N)	6:00 p.m.
Friday	April 1	at California *	7:00 p.m.
Saturday	April 2	at California *	6:00 p.m.
Sunday	April 3	at California *	1:00 p.m.
Tuesday	April 5	CSUN	6:00 p.m.
Thursday	April 7	Stanford * (TV: P12N)	7:00 p.m.
Friday	April 8	Stanford * (TV: P12N)	7:00 p.m.
Saturday	April 9	Stanford * (TV: P12N)	4:30 p.m.
Tuesday	April 12	Loyola Marymount	6:00 p.m.
Friday	April 15	at Washington * (TV: P12N)	7:00 p.m.
Saturday	April 16	at Washington * (TV: P12N)	1:00 p.m.
Sunday	April 17	at Washington *	1:00 p.m.
Tuesday	April 19	at Pepperdine	3:00 p.m.
Thursday	April 21	Oregon * (TV: P12N)	7:00 p.m.
Friday	April 22	Oregon * (TV: P12N)	7:00 p.m.
Saturday	April 23	Oregon * (TV: P12N)	1:00 p.m.
Tuesday	April 26	at Cal State Fullerton (TV: TBD)	7:30 p.m.
Friday	April 29	at Utah *	12:00 p.m.
Saturday	April 30	at Utah *	12:00 p.m.
Sunday	May 1	at Utah *	7:00 p.m.
Tuesday	May 3	at Long Beach State	6:00 p.m.
Friday	May 6	UC Irvine	6:00 p.m.
Saturday	May 7	at UC Irvine	2:00 p.m.
Sunday	May 8	UC Irvine	1:00 p.m.
Tuesday	May 10	Pepperdine	6:00 p.m.
Friday	May 13	USC * (TV: P12N)	7:00 p.m.
Saturday	May 14	USC * (TV: P12N)	7:00 p.m.
Sunday	May 15	USC * (TV: P12N)	6:00 p.m.
Tuesday	May 17	UC Santa Barbara	6:00 p.m.
Friday	May 20	Arizona State *	6:00 p.m.
Saturday	May 21	Arizona State * (TV: P12N)	7:00 p.m.
Sunday	May 22	Arizona State * (TV: P12N)	3:00 p.m.
Friday	May 27	at Oregon State * (TV: P12N)	4:00 p.m.
Saturday	May 28	at Oregon State * (TV: P12N)	4:00 p.m.
Sunday	May 29	at Oregon State * (TV: P12N)	11:00 a.m.
Fri.-Mon.	June 3-6	NCAA Regionals	TBA
Fri.-Mon.	June 10-13	NCAA Super Regionals	TBA
Sat.-Wed.	June 18-29	College World Series	TBA

\* Pac-12 Conference game  
^ Dodger Stadium College Baseball Classic  
(TV: P12N) indicates Pac-12 Networks televised game  
All game times are Pacific Standard Time



## TABLE OF CONTENTS

### General Information

Media Information	4
2013 NCAA Champions	6
Jackie Robinson Stadium	8
Jackie Robinson's Legacy	10
Gifford Hitting Facility	12
Team USA and UCLA	14
Roster	16
TV/Radio Roster	17

### Coaching Staff

Head Coach John Savage	18
Assistant Coach Rex Peters	21
Assistant Coach Bryant Ward	22
Assistant Coach Niko Gallego	23
Director of Operations Seth Moir	23

### 2016 Bruins

A-D	24-29
F-O	30-34
P-V	35-40

### 2015 in Review

2016 NLI Signees	41
Season Results	42
Season Stats	43-44
Game-by-Game Capsules	45-46
Superlatives	47-48
Pac-12 Review	49-50
Honors and Rankings	51

### Big League Bruins

Bruins in the Majors	52-56
Bruins Formerly in the Majors	57-63
MLB Draft History	64

### Records

Game-by-Game Results	65-75
Year-by-Year Summary	76-77
Starting Lineups	78-79
Year-by-Year Leaders	80-82
Team Season Stats	83
Single Season, Career Records	84-85
Miscellaneous Records	86
All-America Selections	87
All-Pac-12 Selections	88
Multiple All-Conference Selections	89

### Tradition

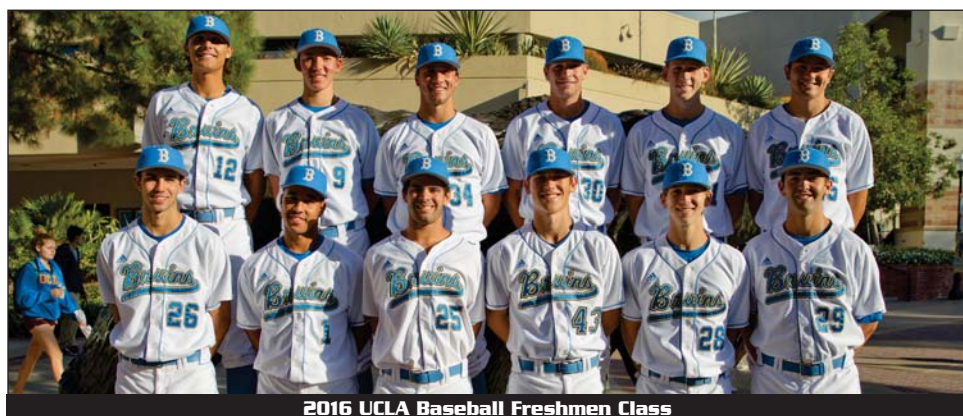
Year-by-Year History	92-98
NCAA Tournament History	99-101
All-Time Postseason Stats	102-103
UCLA Postseason Records	104-105
Jersey History	106-107
All-Time Statistics (since 1975)	108-114
All-Time Letterwinners	115-116
Baseball Hall of Fame	117
UCLA Administrators	118



2015 Pac-12 Conference Champions



2015 UCLA Baseball Senior Class



2016 UCLA Baseball Freshmen Class



## QUICK FACTS

Location	J.D. Morgan Center, 325 Westwood Plaza Los Angeles, CA 90024-0044
Athletics Switchboard	(310) 825-8699
Central Ticket Office	(310) 825-2101
Chancellor	Gene Block
Director of Athletics	Dan Guerrero
Sr. Associate Athletic Director (Baseball)	Mike Linn
Faculty Athletic Representative	Dr. Michael Teitell
Event Management	Dave Martinez
Home Field (capacity)	Jackie Robinson Stadium (1,879)
Press Box Phone	(310) 794-8213
Enrollment	43,239
Founded	1919
Colors	Blue and Gold
Nickname	Bruins
Conference	Pac-12
National Affiliation	NCAA Division I

Head Coach (Alma Mater)	John Savage (Nevada '91)
Record at UCLA (Years)	394-270-1 (11 years)
Career Record	482-354-2 (14 years)
Assistant Coaches	Rex Peters, Bryant Ward, Niko Gallego
Director of Operations	Seth Moir
Baseball SID	Evan Kaplan
SID E-mail	ekaplan@athletics.ucla.edu
SID Phone	(310) 483-0183
SID Fax	(310) 825-8664
Web Site	www.uclabruins.com
2015 Overall Record	45-16
2015 Pac-12 Record	22-8 (1st)
Lettermen Returning/Lost	27/8
Conference Championships (Last)	11 (2015)
NCAA Tournament Appearances (Last)	20 (2015)
College World Series Appearances	5 ('69, '97, '10, '12, '13)
NCAA Championships	1 (2013)

## ABOUT THE INFORMATION GUIDE

**CREDITS:** The 2016 UCLA baseball media guide was written and designed by Evan Kaplan. Photography by ASUCLA Campus Studio (Don Liebig, Scott Quintard and Todd Cheney), Scott James, Carlos Delgado, Scott Chandler, Scott Wu, Larry Goren, Brad Williams, Icon Sports Media and Getty Images. Special thanks to Getty Images, ASUCLA Photography, Andrew Bernstein, the Los Angeles Visitors and Convention Bureau and Don Liebig for their photos in the UCLA Experience, and a special thanks to Brad Williams for his photos from the 2010 College World Series. Also special thanks to Michelle Bishop for her photos from the 2012 College World Series. Photos in the Big League Bruins section courtesy of Major League Baseball, its respective teams and their photographers. Special thanks to Miles Kennedy, the New York Yankees, Jon Willey (Arizona Diamondbacks), Dan Mendlik (Cleveland Indians), Denis Bancroft (Miami Marlins), Larry Babcock (Los Angeles Angels), Juan Ocampo (Los Angeles Dodgers) and Mark Langill (Los Angeles Dodgers).

# UCLA just keeps rolling in Omaha

## BEAR HUG

Their Style is Catching On

Just Doing Their Thing

Adam Plutko  
UCLA

MLB  
NETWORK

# IN THE SPOTLIGHT

## Media Outlets

### Newspapers

**Los Angeles Times**  
202 West First St.  
Los Angeles, CA 90053  
(P): 213-237-7145  
(F): 213-237-7876  
sports.latimes.com

**Los Angeles Daily News**  
21860 Burbank Blvd. (Ste. 200)  
Woodland Hills, CA 91367  
(P): 818-713-3600  
(F): 818-713-3436  
dailynews.com

**Orange County Register**  
625 N. Grand Ave.  
Santa Ana, CA 92711  
(P): 714-796-7817  
(F): 714-565-6765  
ocregister.com

**Long Beach Press Telegram**  
604 Pine Ave.  
Long Beach, CA 90844  
(P): 562-499-1338  
(F): 562-437-8914  
presstelegram.com

**Pasadena Star News**  
**San Gabriel Valley Tribune**  
1210 N. Azusa Canyon Rd.  
West Covina, CA 91790  
(P): 626-962-8811  
(F): 626-856-2758  
pasadenastarnews.com  
sgvtribune.com

**Riverside Press Enterprise**  
3512 14th St.  
Riverside, CA 92502  
(P): 909-368-9533  
(F): 909-368-9029  
pe.com

**South Bay Daily Breeze**  
5215 Torrance Blvd.  
Torrance, CA 90509  
(P): 310-540-4201  
(F): 310-540-3067  
www.dailybreeze.com

**UCLA Daily Bruin**  
308 Westwood Plaza  
Los Angeles, CA 90024  
(P): 310-825-2095  
(F): 310-206-0906  
dailybruin.ucla.edu

### Wire and Stats

**Associated Press**  
221 So. Figueroa, S 300  
Los Angeles, CA 90012  
(P): 213-626-1200  
(F): 213-346-0200  
ap.org

**Sports Ticker**  
(P): 800-766-1899  
(F): 800-336-0383

**Stats, Inc.**  
(P): 847-585-2100  
(F): 800-357-8525

### Television

**Pac-12 Networks**  
360 3rd St., 3rd Floor  
San Francisco, CA 94107  
(P): 415-580-4200  
(F): 415-549-2828

**FS West/Prime Ticket**  
1150 South Olive, Suite 350  
Los Angeles, CA 90015  
(P): 213-743-7800  
(F): 213-763-4633

**ESPN**  
ESPN Plaza  
Bristol, CT 06010  
(P): 860-766-2000

**CBS College Sports**  
85 10th Ave., 3rd Floor  
New York, NY 10011  
(P): 212-342-8700  
(F): 212-342-8899

**MLB Network**  
40 Hartz Way  
Secaucus, NJ 07094  
(P): 201-520-6400  
(F): 201-520-4736

**CBS-2, KCAL-9**  
4200 Radford Ave.  
Studio City, CA 91604  
(P): 818-655-2400

**NBC-4 (Ch. 4)**  
3000 W. Alameda Ave.  
Burbank, CA 91523  
(P): 818-840-4237  
(F): 818-840-3076

**KTLA (Ch. 5)**  
5800 Sunset Blvd.  
Hollywood, CA 90028  
(P): 323-460-5907  
(F): 323-460-5333

**KABC-7**  
500 Circle Seven Dr.  
Glendale, CA 91201  
(P): 818-863-7677  
(F): 818-863-7889

**KTTV (Ch. 11)/KCOP (Ch. 13)**  
1999 S. Bundy Dr.  
Los Angeles, CA 90025  
(P): 310-584-2030  
(F): 310-584-2450

### Radio

**KLAC 570 (FOX Radio)**  
3400 W. Olive Ave. #550  
Burbank, CA 91505  
(P): 818-559-2252  
(F): 818-566-6114 or  
818-566-6105

**KSPN 710 (ESPN Radio)**  
800 W. Olympic Blvd., Ste. A200  
Los Angeles, CA 90015  
(P): 310-840-2492  
(F): 310-558-5648

**uclaradio.com**  
308 Westwood Plaza  
Los Angeles, CA 90024  
(P): 310-825-9104

### Baseball Media

**Baseball America**  
600 S. Duke Street, Box 2089  
Durham, NC 27702  
(P): 919-682-9635  
(F): 919-682-2880  
baseballamerica.com  
John Manuel (editor)  
johnmanuel@baseballamerica.com

**Collegiate Baseball**  
P.O. Box 50566  
Tucson, AZ 95703  
(P): 520-623-4530  
(F): 520-624-5501  
collegiatebaseball.com  
Lou Pavlovich, Jr. (editor)  
lou@baseballnews.com

**D1 Baseball**  
13252 Hamilton St.  
Omaha, NE 68154  
(P): 949-614-5631  
d1baseball.com  
Aaron Fitt (editor)  
aaron@d1baseball.com

**Perfect Game USA (College)**  
1808 Indian Lodge Drive  
Cedar Park, TX 78613  
perfectgame.com/college  
Kendall Rogers, editor  
(P): 979-229-4092

**USA Today**  
10866 Wilshire #890  
Los Angeles, CA 90024  
(P): 310-443-8900  
(F): 310-443-8923  
usatoday.com

**Baseball Weekly**  
1000 Wilson Blvd. 21st Fl.  
Arlington, VA 22229  
(P): 800-872-3410 ext. 4495  
(F): 703-558-4677  
baseballweekly.com

**College Baseball Insider**  
P.O. Box 8235  
Richmond, VA 23226  
collegebaseballinsider.com

**USA Baseball**  
Durham Bulls Athletic Park  
403 Blackwell Street  
Durham, NC 27701  
(P): 919-474-8721, x. 225  
(F): 919-474-8822  
Jake Fehling  
Director, Media Relations





## ATHLETIC COMMUNICATIONS

Evan Kaplan enters his second season as the UCLA Baseball Athletic Communications Director in 2015. Additionally, he serves as the contact for the men's soccer program while assisting at other UCLA sporting events. Kaplan most recently worked in the Los Angeles Lakers public relations department for two seasons.



## MEDIA GUIDELINES

**CREDENTIALS:** All media credential requests should be made, preferably via e-mail, to [ekaplan@athletics.ucla.edu](mailto:ekaplan@athletics.ucla.edu), or by phone as far in advance as possible (no later than 24 hours before game time). Credentials for games and access to coaches and student-athletes are granted to major news-gathering papers, magazines or web sites.

**PHOTO CREDENTIALS:** Credentials will be issued on a per-game basis and must be worn in plain sight at all times. Only credentialed photographers will be granted access to take photos on the field level from the bullpen.

**TELEPHONES:** The press box phone number (for media scoring updates only) is 310-794-8213. Additional phone lines are available on a shared basis in the main press box. Radio positions and additional media seating will be allocated in the press box or adjacent to the broadcast booths, if necessary.

**RADIO LINES:** One telephone line can be made available to the designated radio station of the visiting team. Please make arrangements through the Athletic Communications Office by e-mailing Evan Kaplan ([ekaplan@athletics.ucla.edu](mailto:ekaplan@athletics.ucla.edu)) well in advance.

## UCLA BASEBALL RADIO NETWORK

John Ramey & Tim Wilhelm will team up to call the action at all UCLA home games and road contests in 2016. Live audio of ballgames is available at [uclabruins.com](http://uclabruins.com), the official web site of the UCLA Athletics Department. For updated broadcast schedules, visit the Bruins online at [uclabruins.com](http://uclabruins.com).



**HIGH-SPEED INTERNET:** The press box is equipped with high-speed, wireless Internet for working media only. Additional high-speed data jacks are not available.

**INTERVIEWS:** Coaches and players are available for postgame interviews outside the clubhouse (third-base side) after a brief cooling down period. Midweek interviews can be conducted before practice (best time, between 12-2 p.m.) or after practice. All interview requests must be facilitated through the Sports Information Office.

**UCLABRUINS.COM:** The official web site of the UCLA Athletics Department, [uclabruins.com](http://uclabruins.com) provides up-to-date results, news, schedules, player biographical information, statistics, in-game scoring and links to audio webcasts.

**TWITTER/FACEBOOK/INSTAGRAM:** Follow UCLA baseball on Twitter ([twitter.com/uclabaseball](https://twitter.com/uclabaseball)), Facebook ([facebook.com/uclabaseball](https://facebook.com/uclabaseball)) and Instagram ([uclabruinsbaseball](https://instagram.com/uclabruinsbaseball)) for the latest in-game updates and news.

Evan Kaplan's Office Phone: (310) 206-7873  
Athletic Communications Fax: (310) 825-8664

## ABOUT UCLA'S BASEBALL RADIO CREW

John Ramey returns for his seventh season and Tim Wilhelm returns for his ninth season as the radio voices of UCLA Baseball.

Ramey has had the call of many historic Bruins moments over the past four seasons, including the program's NCAA Championship-clinching win in 2013, the team's College World Series-clinching wins in 2010, 2012, and 2013, and team victories at Dodger Stadium and Safeco Field. In addition to his work for UCLA Baseball, he currently hosts the Bruin Insider Show on AM 570 Fox Sports Radio and has worked for a number of media outlets throughout his career, including Westwood One and CBS Radio. Ramey serves as the play-by-play voice of UC Riverside Men's Basketball as well. He also enjoys a career as a singer/songwriter and musician. When not broadcasting, Ramey performs his music throughout Southern California and the West.



Wilhelm began his tenure with the Bruins from 2007-09, then returned to the booth in 2011, since which time he has called nearly every Bruin game home or away. He began calling college baseball in 1992, serving as Pepperdine's play-by-play announcer. He has broadcast 17 NCAA regional tournaments in addition to calling the 1992, 2012 and 2013 College World Series. He has called more than 1,000 games either broadcast on the radio or streamed online. His previous work includes serving as a broadcaster for Big Ten Football Game of the Week (ABC radio) and as a halftime reporter for Pac-10 Basketball Game of the Week (NBC television).



# 2013 NCAA CHAMPIONS



## BANNER SEASON

UCLA won its first national championship in program history in 2013, defeating Mississippi State in the College World Series Finals by scores of 3-1 and 8-0. The Bruins went a perfect 10-0 in the postseason, becoming the third team in NCAA history to accomplish the feat. UCLA also made history by posting the lowest team ERA in the College World Series' aluminum bat era (0.80 ERA) and becoming the first team to complete the College World Series without allowing more than one run in each game. En route to their first championship, the Bruins defeated four national seeds, eliminating two of them (No. 5 Cal State Fullerton, No. 1 North Carolina). The Bruins won 49 games in 2013, marking the second-highest single-season win total in school history. UCLA totaled at least 40 wins for the third time in four seasons and for the ninth time in program history.



## MOST OUTSTANDING PLAYER ►

Junior Adam Plutko went 2-0 with a 1.38 ERA in two CWS starts, earning him Most Outstanding Player honors at the College World Series. Plutko served as UCLA's Friday starter all season, posting a 10-3 record with a 2.29 ERA and 81 strikeouts. Additionally, he finished his three-year career in sole possession of second place on UCLA's all-time career wins list with 29 victories and seventh on the Bruins' all-time strikeout list, logging 272 strikeouts. In his last 12 starts, Plutko went 11-1 with a 1.58 ERA. In eight career postseason starts, he went 7-0 with a 0.94 ERA.



## REGIONAL SWEEP

The Bruins advanced to the NCAA Super Regional round by winning three consecutive games in the NCAA Los Angeles Regional. Adam Plutko pitched seven strong innings and Pat Gallagher posted a three-hit game to lead UCLA past San Diego State, 5-3, in the opening game. The Bruins then overcame a four-run deficit in game two with help from Kevin Williams' three-run game-tying triple in the sixth inning to defeat Cal Poly, 6-4, to advance to the NCAA Los Angeles Regional finals. In the finals, UCLA met San Diego and earned its third postseason shutout in program history, downing the Toreros, 6-0. Grant Watson, Zack Weiss and David Berg combined to throw a one-hitter against San Diego.



## BRUINS DEFEAT CAL STATE FULLERTON

UCLA traveled on the road for a Super Regional for the first time in six years and defeated Cal State Fullerton in two games to advance to the College World Series for the fifth time in school history. The Bruins earned a dramatic 5-3 10-inning win over the Titans in the first game to take a 1-0 lead in the best-of-three series. Sophomore Eric Filia led UCLA with a 4-5 night that included the game-winning RBI in the top of the 10th. Junior Adam Plutko was terrific on the mound once again, pitching seven strong innings and allowing just one unearned run. David Berg picked up the win with three innings in relief. Then in Game 2, the Bruins scored three runs in the bottom of the first to propel them to a 3-0 shutout win over Fullerton. Junior Pat Gallagher hit a two-run single in the bottom of the first to give UCLA the lead while junior Nick Vander Tuig held the Titans scoreless on the mound for 6.1 innings. Freshman James Kaprielian, junior Zack Weiss and Berg then combined to hold the lead for 2.2 innings in relief.



## ACE NUMBER TWO

Junior-right hander Nick Vander Tuig enjoyed an outstanding season on the mound for the Bruins, serving as the team's Saturday starter all year. The right-hander from Oakdale, Calif. posted a 14-4 record on the season with a 2.16 ERA. He led the Bruins with 93 strikeouts and allowed just 18 walks all season, eighth-fewest in the Pac-12. Vander Tuig's 14 wins were also tied for the most in the conference and are second-most on UCLA's all-time single season wins list. Additionally, he threw at least six innings in 17 of his 19 starts and finished his career tied for third with Alex Sanchez (1985-87) on UCLA's all-time career wins list (27). Vander Tuig appeared in 10 career postseason games, starting seven of them and posting a 6-2 record with a 2.13 ERA. In the 2013 postseason, he went 4-0 with a 1.65 ERA and 19 strikeouts in 27.1 innings pitched.



## ALL-TOURNAMENT TEAM

Four Bruins landed on the All-CWS team, with pitcher Adam Plutko earning Most Outstanding Player honors at the tournament. Joining Plutko on the All-CWS team were pitcher Nick Vander Tuig, shortstop Pat Valaika and outfielder Eric Filia. Vander Tuig also went 2-0 at the CWS, posting a 0.60 ERA and 12 strikeouts in 15 innings pitched. Vander Tuig earned the victory in the championship-clinching game against Mississippi State with a dominating performance, tossing eight shutout innings and striking out six. Filia batted .333 with eight RBI in the CWS, including a career-high five RBI in game 2 of the CWS Finals. Finally, Valaika anchored a UCLA defense that posted a .984 fielding percentage in the CWS while knocking in four runs at the plate.



# STEELE FIELD at JACKIE ROBINSON STADIUM

Steele Field at Jackie Robinson Stadium celebrates its 36th season as UCLA's home baseball facility in the spring of 2016, after having undergone significant renovations since 2006. Jackie Robinson Stadium hosted the NCAA Los Angeles Regional from 2010 to 2013 and in 2015 and the NCAA Los Angeles Super Regional in 2010 and 2012, drawing crowds of over 2,000 fans. Prior to 2010, UCLA had not hosted postseason play since 1986.

Most recently, UCLA added a state-of-the-art video scoreboard in the winter of 2013. The new LED video display features a 15HD pixel layout and measures nearly 17 feet tall by more than 49 feet wide, making it one of the largest video scoreboards in the Pac-12.

In 2011, UCLA added 580 chairback seats to the facility, allowing Jackie Robinson Stadium to seat 1,820 fans on a regular basis. The baseball program added 290 chairback seats above each of the dugouts, replacing grass slopes which had existed since the stadium's founding in 1981.

In January 2009, the facility welcomed a 10,500-square foot hitting complex, named the Jack and Rhodine Gifford Hitting Facility. Midway through the 2008 season, UCLA upgraded its stadium lights, making necessary improvements to meet NCAA standards for hosting an NCAA Super Regional. In January 2008, UCLA installed a state-of-the-art playing surface, a major upgrade made possible by the Steele Foundation.

Prior to the 2007 season, the UCLA baseball program installed a

major-league quality net behind home plate, improving sightlines for fans and television crews. Other major improvements have included the addition of 945 chairback seats with cupholders in February 2006. The stadium welcomed a new hitter's eye, draped above the center field wall, and the Bruins' scoreboard received a well-deserved face lift.

Located on the site of old Sawtelle Field, Jackie Robinson Stadium provides one of the most comfortable college baseball settings in the West. The stadium was made possible by a private gift from Hoyt Pardee (UCLA '41), a classmate of Jackie Robinson. Without Hoyt, the stadium would not be a reality.

At the end of the 1984 season, the second major phase of the stadium's original construction was completed. A new clubhouse, press box, concessions stand, and permanent restrooms were added. The clubhouse contains training and equipment rooms, a meeting room, offices and the UCLA Baseball Hall of Fame, which displays plaques of all its members.

The main press box is flanked by two broadcast booths and provides ample space for members of the media. Camera positions for television coverage are located atop both dugouts and on the concourse. Controls for the public address system, electronic scoreboard and lighting systems are located in the main press box. The concession is located above the first base seats along with public restrooms. On select weekends, a second concession stand provides food and beverages above

the third base seats.

Jackie Robinson Stadium, the program's sixth home field, can be accessed via the San Diego Freeway (405) and Wilshire Blvd. Located on Constitution Avenue (west off Sepulveda Blvd.), the stadium is minutes away from the UCLA campus.

Jackie Robinson Stadium was dedicated on Feb. 7, 1981 with an exhibition game between the Bruins and the Los Angeles Dodgers that drew 2,500 fans. The facility hosted the 1986 West Coast Conference playoff game between Pepperdine and Loyola Marymount. One week later, the stadium hosted the 1986 NCAA West Regional Tournament. Loyola Marymount, UC Santa Barbara, Hawaii, and UCLA participated in the regional, won by Loyola Marymount. The 1986 West Regional was the Los Angeles area's first NCAA postseason tournament since the 1978 District 8 Playoffs were hosted at USC's Dedeaux Field. The 1986 regional championship contest between Loyola Marymount and Hawaii drew a crowd of 1,815.

Jackie Robinson, for whom the stadium is named, was the first African-American baseball player to compete in the major leagues when he joined the Brooklyn Dodgers in 1947. As a student-athlete at UCLA, Robinson became the Bruins' first four-sport letterman, playing football, basketball, track, and baseball. A bronze statue of Robinson is located near the concession stand on the concourse level. The statue was dedicated on April 27, 1985, before the UCLA-Arizona State game.





<b>UCLA's Home Fields</b>	<b>Years</b>
Moore Field (Vermont Avenue)	1920-29
Campus Diamond (UCLA)	1930-32
Sawtelle Field (VA Grounds)	1933-38
Joe E. Brown Field (UCLA)	1939-63
Sawtelle Field (VA Grounds)	1964-79
Eddy D. Field Stadium (Pepperdine)	1980
Jackie Robinson Stadium (VA Grounds)	1981-Present

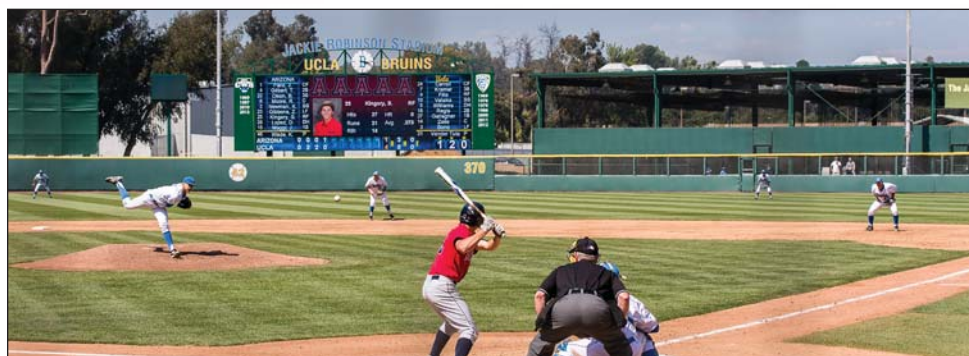
#### Year-by-Year at Jackie Robinson Stadium

Year	Record	Games	Year	Record	Games
2015	25-6	31	1997	21-7	28
2014	11-20	31	1996	19-11	30
2013	27-9	36	1995	14-16	30
2012	27-10	37	1994	14-15	29
2011	21-11	32	1993	19-11	30
2010	29-10	39	1992	23-9	32
2009	16-10	26	1991	13-15	28
2008	18-13	31	1990	21-10	31
2007	19-11	30	1989	17-15	32
2006	19-12	31	1988	14-10	24
2005	7-19	26	1987	20-6-1	26
2004	17-13	30	1986	23-12	35
2003	15-13	28	1985	19-9-1	29
2002	13-16	29	1984	17-13	30
2001	19-9	28	1983	17-13	30
2000	20-10	30	1982	28-10	38
1999	17-10	27	1981	13-18	31
1998	15-12	27			

**35 years, 631-344-2 record (.633)**

#### Jackie Robinson Stadium Collegiate Firsts

<b>First Collegiate Game:</b>	Feb. 14, 1981 (Pepperdine 9, UCLA 6)
<b>First Collegiate Pitch:</b>	strike – UCLA's Eric Broersma to batter John Damon (Tim Gudin, C).
<b>First Strikeout:</b>	UCLA's Eric Broersma to Pepperdine's John Damon
<b>First Hit:</b>	Pepperdine's Ron Dearth off Eric Broersma (2nd inning)
<b>First UCLA Hit:</b>	Paul Conley off Pepperdine's Jon Furman (3rd inning)
<b>First Run:</b>	Pepperdine's John Wyman (RBI, Alan Ascher!) off Eric Broersma (3rd inning)
<b>First UCLA Run:</b>	David Montanari (RBI, Lindsay Meggs 3-run double), off Jon Furman (4th inning)
<b>First Home Run:</b>	UCLA's Greg Norman (Mike Gallego at first), off Chapman's Charlie Deeds (4th inning), 2/18/81
<b>First UCLA Win:</b>	Feb. 18, 1981 (UCLA 10, Chapman 3)





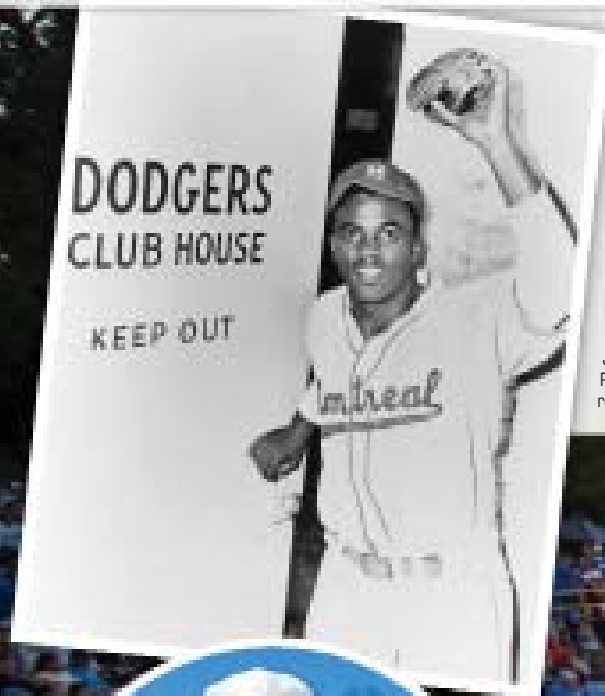
# JACKIE ROBINSON'S LEGACY

## Jackie Robinson - Breaking Barriers Major League Baseball's First African-American Player

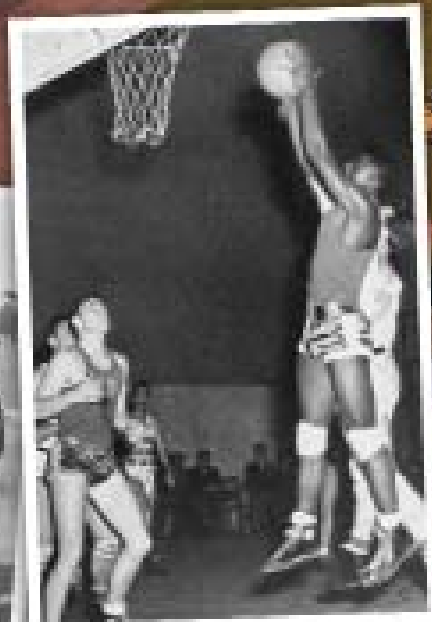
Jackie Robinson became the first African-American Major League Baseball player of the modern era in 1947. Born January 31, 1919 in Cairo, Ga., Robinson was the first four-sport letterman in UCLA history – football (1939 and 1940), basketball (1940 and 1941), track and field (1940) and baseball (1940).

As UCLA's shortstop in 1940, statistics indicate that baseball was the sport with which he had the most trouble. Robinson batted .097 in CIBA games the one season he played baseball for the Bruins. He excelled at the three other sports, earning All Pac-10 honors in football, being named the West Coast Conference MVP in basketball, and establishing a long jump record. Nevertheless, due to his slick fielding and keen baserunning, fans found Robinson in the starting lineup the majority of the season.

As a youngster, his mother (Mallie) moved the Robinson family to Pasadena, Calif., after his father abandoned the family. After the move, the Robinson family quickly gained recognition for their fantastic athletic abilities, the climax coming during the 1936 Olympics where older brother Mack Robinson received a silver medal in the 200-meter dash behind the legendary Jesse Owens. In 1942, Robinson put athletics on hiatus to enlist in the U.S. Army. In the face of humiliating discrimination, Robinson took his first major step toward dismantling racial barriers. Serving in Texas, Robinson was court-martialed for refusing to move to the back of a military bus. He was eventually acquitted and given an honorable discharge.



This collage (left) hangs on the outfield wall at Jackie Robinson Stadium, paying tribute to UCLA's first four-sport letterwinner.



### Robinson on the Baseball Diamond

Robinson played one season on the baseball team (1940), batting just .097 in CIBA (California Intercollegiate Baseball Association) play. In his first game (March 10), he had four hits and stole four bases, including home once.

### Robinson on the Track and Field Team

Jackie Robinson missed most of the 1940 track and field season while playing on the UCLA baseball team. Robinson won the NCAA title in the broad jump (24-10 1/4) that season after winning the Pacific Coast Conference meet with a leap of 25 feet (photo, above center).

### Robinson on the Basketball Court

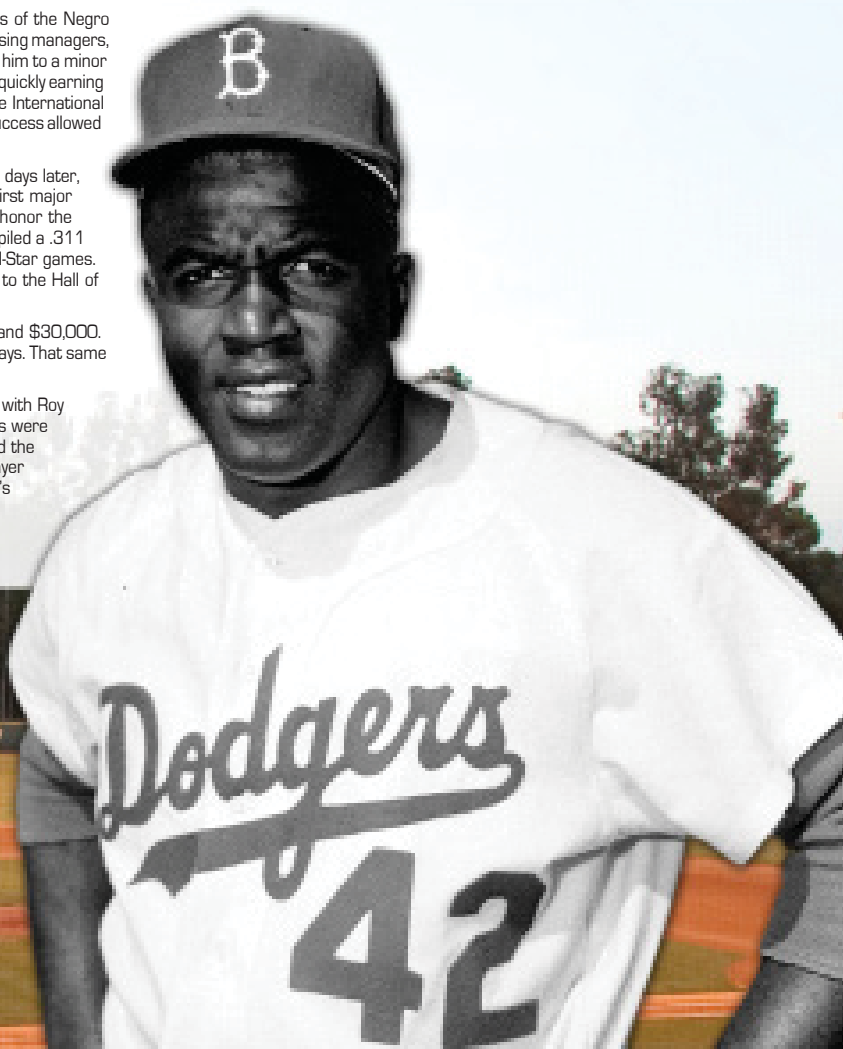
A two-year letterwinner on UCLA's basketball team, Robinson led the Southern Division of the Pacific Coast Conference in scoring in 1940, averaging 12.4 points per game in 12 league contests. The four-sport letterwinner also led the Pacific Coast Conference in 1941, averaging 11.1 points pre game in 12 league games. Robinson played both seasons under nine-year head coach Wilbur Johns.

His military career finished, Robinson gave baseball another try. The Kansas City Monarchs of the Negro Baseball League offered him a contract in 1944. Robinson quickly caught the attention of opposing managers, and more importantly, major league scouts. Brooklyn Dodger President Branch Rickey signed him to a minor league contract with a Montreal farm club in 1945. Robinson started the year on a hot streak, quickly earning the respect of the French-Canadian fans in Montreal. He completed the year by winning the International League batting title, hitting .349 in 124 games and leading his team to the championship. His success allowed Rickey to decide that everything was in order for a groundbreaking debut with the Dodgers.

Rickey announced that Brooklyn had purchased Robinson's contract on April 10, 1947. Five days later, Robinson grounded out against Johnny Sain of the Boston Braves, officially recording the first major league at-bat by an African-American. He won the first ever Rookie of the Year Award, an honor the National League renamed in his memory in 1987. During his 10-year career, Robinson compiled a .311 batting average and one National League MVP award, playing in six World Series and six All-Star games. Robinson was the first African-American to win the MVP award and the first to be elected to the Hall of Fame (1962).

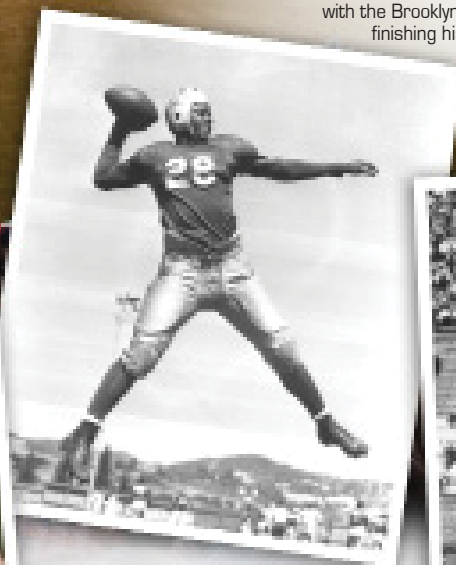
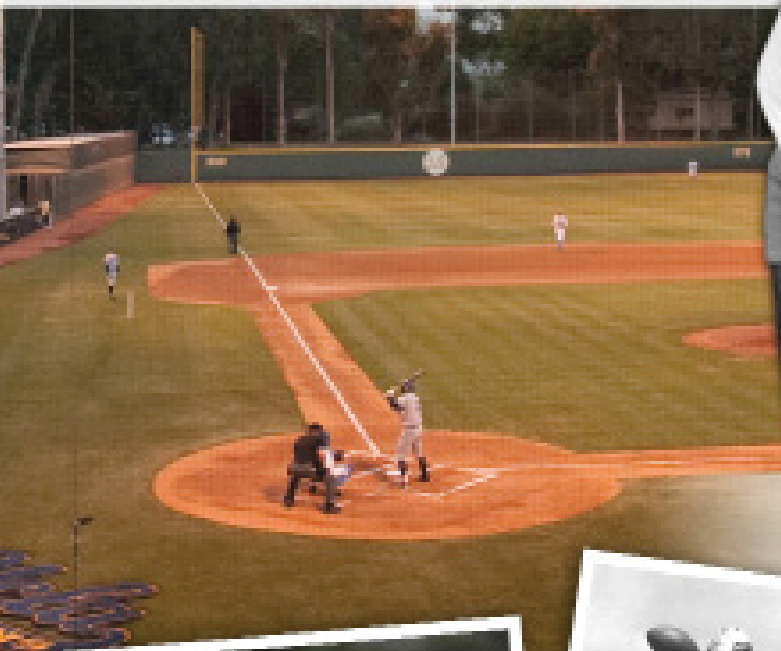
In 1957, the Dodgers traded Robinson to the New York Giants for pitcher Dick Littlefield and \$30,000. Partially in response to this surprising move, Robinson decided it was time to end his playing days. That same year, Jackie was diagnosed with diabetes, a disease that led to his death in 1972.

Prior to his passing on June 4, 1972, Robinson's No. 42 was retired by the Dodgers along with Roy Campanella's No. 39 and Sandy Koufax's No. 32. On February 2, 1981, the finishing touches were put on Jackie Robinson Stadium, the current home of the Bruins. The U. S. Post Office issued the "Jackie Robinson Black Heritage" stamp on Aug. 2, 1982, featuring the first baseball player ever depicted on a U.S. stamp. In 1984, President Ronald Reagan acknowledged Robinson's accomplishments by awarding him the Medal of Freedom, the nation's highest civilian award. In March 2005, Robinson was awarded the Congressional Gold Medal. The award was presented by President George W. Bush to members of Robinson's family.



#### Jackie Robinson as a Brooklyn Dodger

Jackie Robinson had a remarkable 10-year major league career, playing each season with the Brooklyn Dodgers. Robinson totaled 137 home runs and 734 RBI for Brooklyn, finishing his career with a .311 batting average, 947 runs and 197 stolen bases.



#### Robinson on the Football Field

Jackie Robinson led the nation in punt return average in 1939 and 1940. Robinson averaged 16.5 yards per return in 1939 and followed that effort with 21.0 yards per return in 1940. Robinson's career average of 18.8 yards per return ranks fourth in NCAA history. In 1940, he led UCLA in rushing (383 yds), passing (444 yds), total offense (827 yds), scoring (36 pts) and punt returns (21.0 ypr). In his two-year career on the gridiron, Robinson rushed for 954 yards (5.9 avg) and passed for 449 yards.



# JACK AND RHODINE GIFFORD HITTING FACILITY

The UCLA baseball program completed construction of the Jack and Rhodine Gifford Hitting Facility in February 2009 and has taken full advantage of the 10,500-square foot practice complex. The facility was generously funded by the late Jack Gifford and his wife, Rhodine. Jack played baseball at UCLA in the early 1960s before graduating in 1963.

UCLA's hitting facility stands behind the right field fence, extending from the right-field foul pole toward the stadium's scoreboard in center field. Construction of the facility began in early December 2008, and the project was fully completed by early February 2009.



UCLA's hitting facility allows natural light and also features interior lighting. The floor consists of high-quality synthetic turf. In all, the complex allows for two 30-x-70-foot cages and three 20-x-60-foot cages, all which feature retractable netting.





#### KEY FEATURES OF UCLA'S GIFFORD HITTING FACILITY

- Dimensions of the practice complex run 23-feet high, 70-feet wide and 150-feet long
- Practice complex features an adjustable interior design, accomodating up to five hitting cages at once
- Cages include multiple pitching machines, including those capable of throwing breaking balls
- Accomodates room for defensive drills and pitching instruction on the south-facing half of the complex
- Spacious tee area within the facility allows for additional hitting drills
- State-of-the-art synthetic turf allows position players to practice fielding

*"We are very thankful to Jack and Rhodine for their vision with this state-of-the-art hitting facility. This facility has brought a new dimension of player development to our program. Our players and coaches are very excited about having this training facility, one that is among the nicest in the country. The Jack and Rhodine Gifford Hitting Facility is a special place for all Bruins."*

— UCLA head coach John Savage

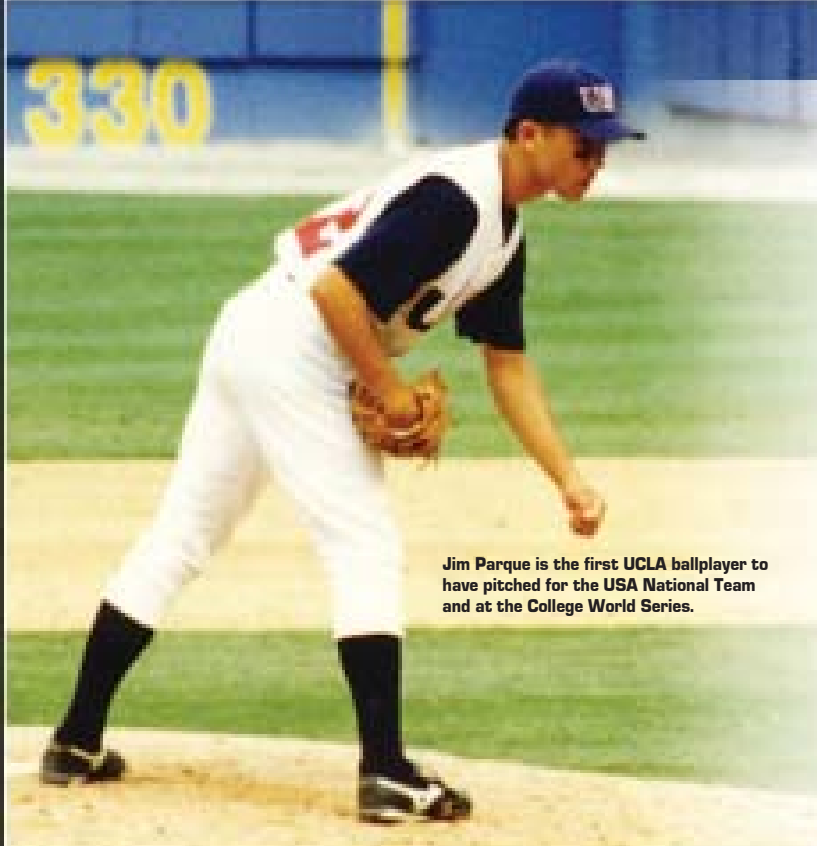
**The Jack and Rhodine Gifford Hitting Facility was built in less than five weeks, spanning from December 2008 through January 2009. Photos to the right (clockwise from top) show the construction of the hitting facility in December 2008.**



**Jack and Rhodine Gifford**



# TEAM USA AND UCLA



Jim Parque is the first UCLA ballplayer to have pitched for the USA National Team and at the College World Series.

UCLA has sent 14 players to play for the USA Baseball National Team a total of 18 times, beginning with the selection of Shane Mack in 1984. Most recently, James Kaprielian led team USA in 2014 and was awarded with the Performance of the Year Award for his 6.0 inning shutout of Chinese Taipei.

Trevor Bauer and Gerrit Cole's selection in 2009 marked the first time a Bruin had been named to the USA Baseball National Team since 2006, when three-year UCLA starting shortstop Brandon Crawford helped lead Team USA to the 2006 FISU World Championship that summer.

UCLA's student-athletes have not been the only individuals affiliated with Team USA's National Team. While working as an assistant coach at USC in the summer of 2000, current UCLA head coach John Savage served as an assistant to Mike Gillespie for the USA National Team of collegiate all-stars.

UCLA Player	Years	UCLA Player	Years
James Kaprielian	2014	Josh Karp	1999, 2000
David Berg	2012, 2013	Jon Brandt	1999
Adam Plutko	2012	Bill Scott	1999
Gerrit Cole	2009, 2010	Eric Valent	1997
Steve Rodriguez	2010	Jim Parque	1996
Trevor Bauer	2009	Troy Glasus	1995, 1996
Brandon Crawford	2006	Shane Mack	1984

▼ In two summers pitching for the USA National Team, Gerrit Cole went 6-0 with a 0.91 ERA, logging 69 strikeouts and 14 walks in 59.0 innings. He led the USA National Team in innings both summers, appearing in 11 total games (nine starts).

## ▲ Jim Parque's National Team Stats

YR	ERA	W-L	G/GS	CG	SV	IP	H	R	ER	BB	SO	OAV
1996	3.30	1-0	15/0	0	3	30.0	32	14	11	11	37	.274

## Gerrit Cole's National Team Stats ►

YR	ERA	W-L	G/GS	CG	SV	IP	H	R	ER	BB	SO	OAV
2009	1.06	4-0	6/5	1	0	34.0	11	4	4	10	46	.104
2010	0.72	2-0	5/4	0	1	25.0	24	4	2	4	23	.267
<b>TOTALS</b>	<b>0.91</b>	<b>6-0</b>	<b>11/9</b>	<b>1</b>	<b>1</b>	<b>59.0</b>	<b>35</b>	<b>8</b>	<b>6</b>	<b>14</b>	<b>69</b>	<b>.179</b>



## ▲ Jon Brandt's National Team Stats

YR	ERA	W-L	G/GS	CG	SV	IP	H	R	ER	BB	SO	OAV
1999	7.12	1-2	9/4	0	0	30.1	38	28	24	13	26	.314

## Bill Scott's National Team Stats ▲

YR	AVG	GP-GS	AB	R	H	2B	3B	HR	RBI	BB	SB-SBA	OBP
1999	.340	36-34	141	31	48	8	2	9	32	8	4-6	.373

## Troy Glasus's National Team Stats ▲

YR	AVG	GP-GS	AB	R	H	2B	3B	HR	RBI	BB	SB-SBA	OBP
1995	.306	35-27	111	19	34	3	0	2	15	10	0-1	.369
1996	.342	35-31	120	35	41	8	2	15	34	16	0-0	.423
<b>TOTALS</b>	<b>.324</b>	<b>70-58</b>	<b>231</b>	<b>54</b>	<b>75</b>	<b>11</b>	<b>2</b>	<b>17</b>	<b>49</b>	<b>26</b>	<b>0-1</b>	<b>.396</b>

## James Kaprielian's National Team Stats

YR	ERA	W-L	G/GS	CG	SV	IP	H	R	ER	BB	SO	OAV
2014	1.07	3-1	5/5	0	0	25.1	13	4	3	7	29	.149



UCLA head coach John Savage served as pitching coach of the U.S. National Team of collegiate all-stars in the summer of 2000.



**Steve Rodriguez's National Team Stats ▲**

YR	AVG	GP-GS	AB	R	H	2B	3B	HR	RBI	BB	SB-SBA	OBP
2010	.080	11-8	25	2	2	0	0	0	0	5	1-2	.281

**Eric Valent's National Team Stats ▲**

YR	AVG	GP-GS	AB	R	H	2B	3B	HR	RBI	BB	SB-SBA	OBP
1996	.345	34-31	119	24	41	10	3	7	34	16	1-3	.413

**▲ Brandon Crawford's National Team Stats**

YR	AVG	GP-GS	AB	R	H	2B	3B	HR	RBI	BB	SB-SBA	OBP
2006	.257	23-10	35	7	9	2	0	0	6	3	1-2	.315

**◀ Shane Mack's National Team Stats**

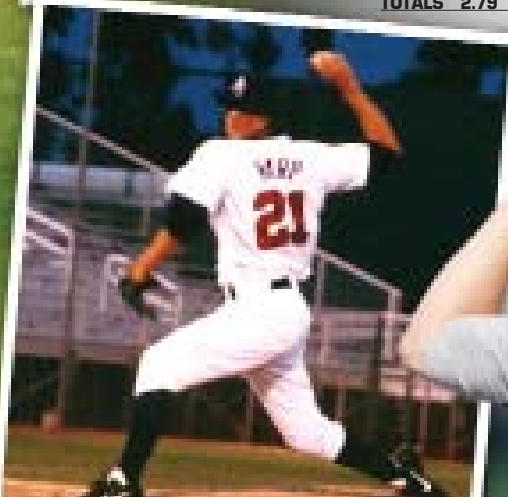
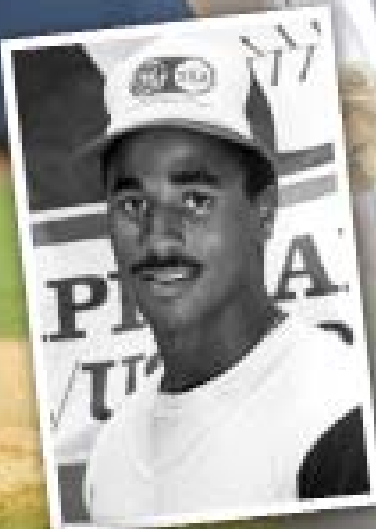
YR	AVG	GP	AB	R	H	2B	3B	HR	RBI	BB	SB
1984	.287	34	115	21	33	4	3	4	14	20	4

**Adam Plutko's National Team Stats ►**

YR	ERA	W-L	G/GS	CG	SV	IP	H	R	ER	BB	SO	OAV
2012	2.63	0-0	3/3	0	0	13.2	9	4	4	5	12	.188

**▼ Josh Karp's National Team Stats**

YR	ERA	W-L	G/GS	CG	SV	IP	H	R	ER	BB	SO	OAV
1999	3.72	4-2	7/6	0	0	36.1	37	15	15	13	35	.276
2000	1.82	3-0	7/6	0	0	34.2	27	12	7	13	38	.216
TOTALS	2.79	7-2	14/12	0	0	71.0	64	27	22	26	73	.240



**David Berg's National Team Stats ►**

YR	ERA	W-L	G/GS	CG	SV	IP	H	R	ER	BB	SO	OAV
2012	3.72	0-1	9/0	0	2	11.2	13	5	4	4	10	.277
2013	2.89	3-0	7/0	0	0	9.1	5	3	3	1	9	.147
TOTALS	3.00	3-1	16/0	0	2	21.0	18	8	7	5	19	.171

**Trevor Bauer's National Team Stats ►**

YR	ERA	W-L	G/GS	CG	SV	IP	H	R	ER	BB	SO	OAV
2009	4.67	1-1	5/3	1	0	17.1	13	10	9	7	24	.213

